



New art, great space

Design district gets a contemporary new neighbour

You can't turn a corner in Dubai these days without stumbling across another newly opened art space.

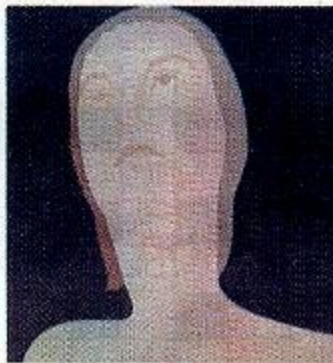
Most recently, it's the Artsawa contemporary gallery that has opened to the public.

While New York might have the meatpacking district to house its collectables, in Dubai it's the industrial warehouses of Al Quoz that exhibit established and up and coming artists.

And Artsawa gallery must definitely be in the know as it's secured itself a warehouse in this funky art district to promote its regional contemporary pieces.

Offering an inspiring and interactive space for artists and art-lovers, Artsawa hopes to become a hub for contemporary art in Dubai, as well as offer a distinctive platform for upcoming artists from the Middle East, North Africa, according to gallery owner, Amel Makkawi.

Set in a giant warehouse that has been transformed into a distinctive state-of-the-art 12,000sq ft art platform with over 3,000ft of linear wall space, Artsawa promises to be the perfect backdrop to showcase the works of the region's best and budding contemporary artists.



For more information on Artsawa contemporary gallery contact 04 340 8660, or simply log on to www.artsawa.com